



Bottom Loading Furnaces and Kilns

Keith bottom loading furnaces and kilns are ideal when you need versatility and consistent product quality. This is especially true for new processes still being developed. Flexibility is also important for products that require you to fire different cycles from day to day, or in small lots to as high as 1700°C/3100°F.

Combining 50 years of furnace and kiln building experience with the latest technology and modern materials enables Keith to deliver advanced furnace technology at competitive prices. These furnaces are well suited for calcining, firing, and sintering oxide ceramic parts (alumina, zirconia, etc.), technical ceramics, co-fired substrate materials, capacitors, filters, thermistors, ferrites, powdered metal parts, and more. After reviewing our capabilities, we invite you to call us and challenge us with your specific needs.

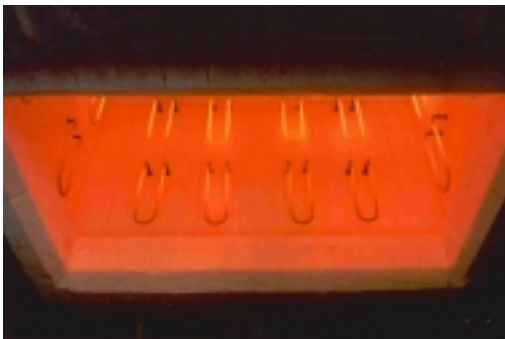
GENERAL CAPABILITIES

- Temperatures to 1650°C/3000°F with gas, and to 1700°C/3100°F with electric heating
- Wire, rod overbend, silicon carbide, or molybdenum disilicide heating elements
- Chamber volumes up to 6 m³ (200 ft³)
- Single or multiple zones of temperature control
- Cars, venting, and controlled atmosphere systems
- Integration with material handling automation
- PC/PLC control systems
- Designed to any available voltage



OPERATIONAL BENEFITS

- Compact design saves floor space
- Heating system delivers more uniform process heat
- Energy efficient and durable refractory construction
- Cars facilitate loading and unloading
- Highly reliable automatic process control systems
- Ease of operation and maintenance



CONSTRUCTION

Insulation systems of brick, ceramic fiber, or a combination of both provide the right balance of durability, rapid heating and cooling, and energy efficiency. The loading platform may be fixed on the elevator, or on a rolling car. Electromechanical elevator systems provide safe, reliable and user-friendly operation for many years.



CONTROLS

Highly accurate microprocessor-based programmable temperature controls are standard on all systems, with integrated sequencing and alarm annunciation. Controls are mounted either in a free standing or wall-mounted enclosure, depending on the size of the system. Remote monitoring and data-logging via computer is a popular option.



FAST FACTS

- New equipment and upgrades of older systems
- UL electrical panel design and fabrication
- Complete system fabrication, assembly, testing
- Installation, start-up, and commissioning
- Online documentation and troubleshooting
- Single source of replacement parts
- Full range of technical support services

QUALITY YOU CAN DEPEND ON

Maximum product quality and yield, lower energy costs, more effective use of manpower, and dependability are benefits you will receive from your Keith bottom loading furnace or kiln. We use only the best materials, combined with intelligent design and durable, attractive construction. Choosing a furnace with known reliability and quality now will result in fewer problems in future years.



SERVICE

Outstanding service begins the first time you contact **Keith** and continues for as long as you own your equipment. We make a point of responding quickly to your questions with reliable technical information. Our field service engineers are ready to help your installation and start-up go smoothly and quickly. **Your success is our goal!**

KEITH COMPANY

8323 Loch Lomond Drive
Pico Rivera, California 90660

Visit us on the web at www.KeithCompany.com

tel 562.948.3636 • fax 562.949.3696 • info@KeithCompany.com